

GO WITH THE FLOW.



# HARDWARE INSTALLATION GUIDE- WONDERBOX 12/24V REV 1



Part# US110500999

# OVERVIEW



INVENTORY MANAGEMENT

## DESCRIPTION

The Wonder Box consists of the HDA eco automatic dispenser, which is mounted in a sheet metal housing. The built-in HDA eco automatic dispenser is optimised for the administration of small and medium-sized vehicle fleets and enables the administration of up to 10,000 transactions/2000 users.

Optional, additional components to create an entire tank system are the feed pump, the flow meter, the dispensing hose with an automatic nozzle and, if applicable, an analogous level probe or fill level switch for monitoring the level in the tank.

## INTENDED USE

The Wonder Box is designed as a Fluid Inventory Control System for use in industry, service centers, filling stations and similar facilities.

It is intended for the control of dispensing during the refuelling of vehicles with liquid and pumpable operating media.

**The installation and operation of the Wonder Box in explosion hazardous areas is not permitted. This would constitute a risk of explosion.**

## PERMITTED MEDIA

**All liquid and pumpable operating media including diesel, fuels, chemicals, oils, water, heating oil, coolant, DEF, windshield washer.**

**Please check the safety data sheet for your medium.**

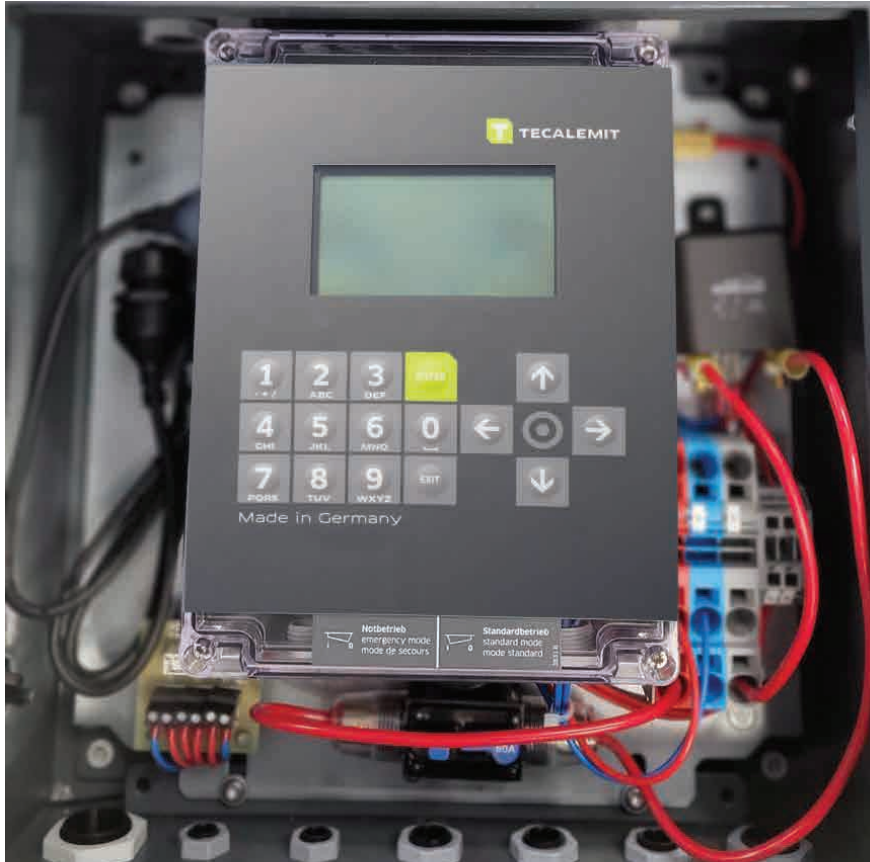
**In the case that the medium generates explosion hazards, the user has to make sure that the used additional equipment (e.g. pump and meter) and the electrical and mechanical installation follows the national regulations of explosion protection**

## TECHNICAL DATA

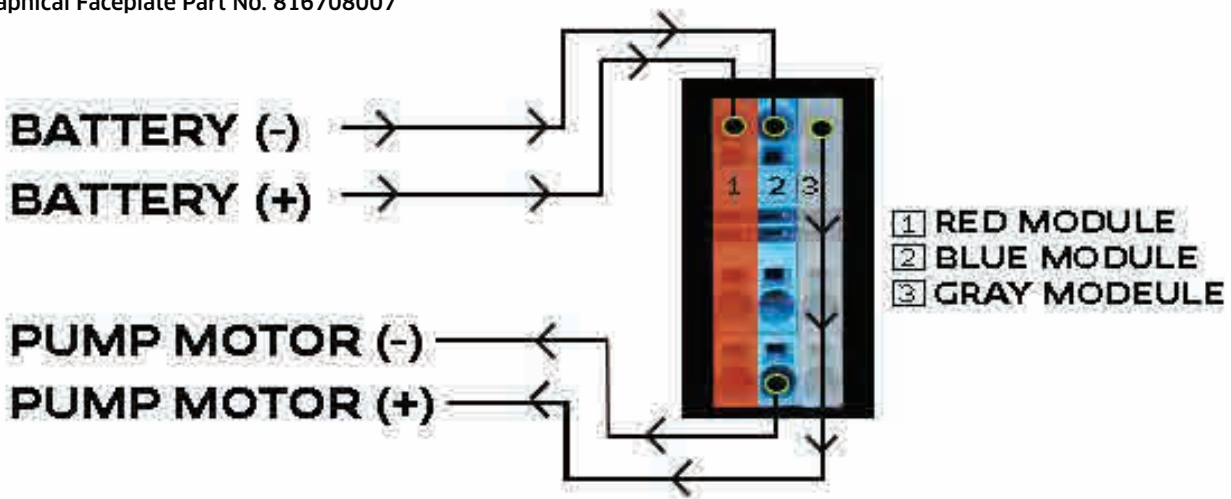
Dimensions: (WxHxD)	approx 11.75" x 11.75" x 5"
Voltage	12V/24V
Ambient temperature	-4 °F to 131°F
Protection class	IP54
Weight	18 lbs
Maximum pulse frequency for the external used flow meter	240 Hz
Maximum failure elevation of the used measuring equipment	
- for a flow meter	0,1%
- for a level sensor	1%

GO WITH THE FLOW.

# ELECTRICAL WIRING



Board Part No. 816808003  
Graphical Faceplate Part No. 816708007



NOTE: This Wonderbox is smart enough to detect inbound power.  
Ex: If you give it 24v power, it will output 24v power.

**Make sure you know what power requirements your pump will need.**